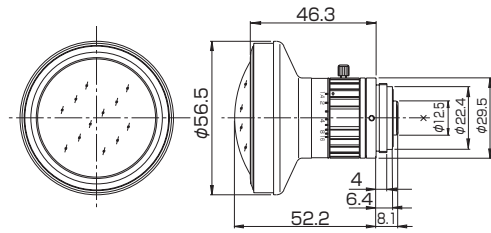
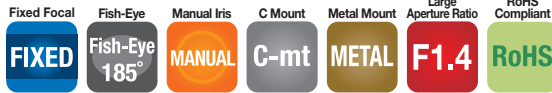


FE185C057HA-1

Applicable camera (model) 1 2/3 1/2 1/3 1/4 For Security



* Photograph is a similar model.



Unit : mm

FE185C057HA-1

Focal Length (mm)	1.8	
Iris Range	F1.4 - F16	
Operation	Focus	Fixed
	Iris	Manual
Angle Of View (H×V)	2/3"	185° × 185°(φ5.7mm)
	1/2"	185°01' × 154°08'
	1/3"	154°08' × 115°27'
Focusing Range (From Front Of The Lens) (m)	∞ - 0.1	
Back Focal Distance (in air) (mm)	9.70	
Exit Pupil Position (From Image Plane) (mm)	-61	
Filter Thread (mm)	-	
Mount	C	
Mass (g)	135	
Remarks	<ul style="list-style-type: none"> • With Metal Mount • With Locking Knob for Iris 	

[Fish-Eye Lens Image]



2/3"



1/2"



1/3"