

Fixed Focal (2.8mm)

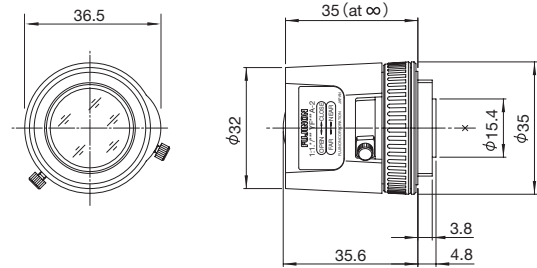
YF2.8A-2

Applicable camera (model) 1 2/3 1/2 1/3 1/4 For Security

Fixed Focal **FIXED** Wide Angle **WIDE** Manual Iris **MANUAL** CS Mount **CS-mt** Large Aperture Ratio **F1.3** RoHS Compliant **RoHS**



* Photograph is a similar model.



Unit : mm

YF2.8A-2		
Focal Length (mm)		2.8
Iris Range		F1.3 - Close
Operation	Focus	Manual
	Iris	Manual
Angle Of View (H×V)	1/3"	96°15' × 71°51'
	1/4"	71°51' × 53°45'
Focusing Range (From Front Of The Lens)(m)		∞ - 0.1
Object Dimensions at M.O.D. (H×V)(mm)	1/3"	241 × 157
	1/4"	157 × 110
Back Focal Distance (in air) (mm)		8.11
Exit Pupil Position (From Image Plane) (mm)		166
Filter Thread (mm)		-
Mount		CS
Mass (g)		40
Coil Resistance		-
Current Consumption		-
Remarks		