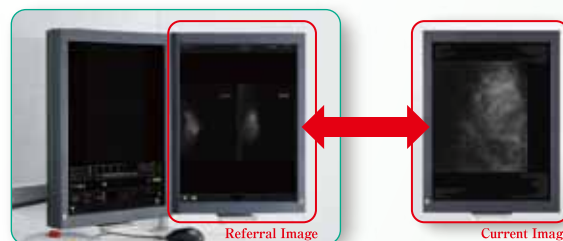


# Accurate and Efficient Stereotactic Biopsy

## Easy positioning of patients

Flexible positioning of tube and detector from -90° to +90° is available. Ergonomically designed arm rests and disposable soft pads help to make patients more comfortable.

It is possible to review previous examinations on the system for more accurate initial positioning. The Referral Image Viewing function requests and displays images of previous examinations stored in the PACS and makes positioning easy.



## Targeting support functions

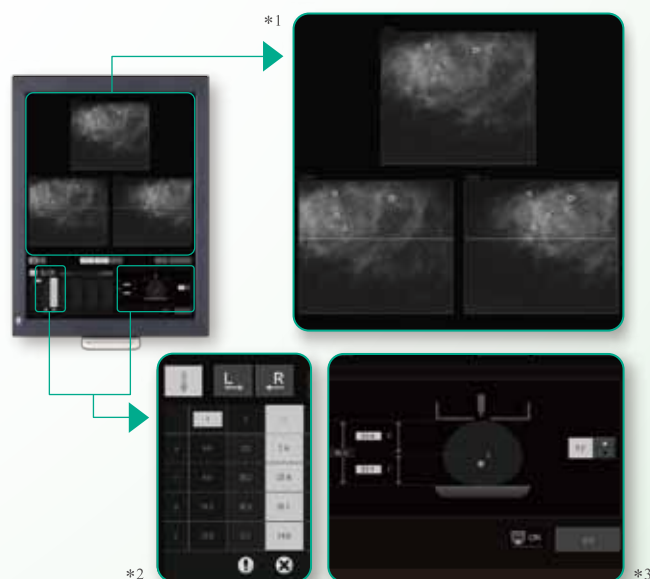
High resolution dual display system, targeting guide function on stereo images, various image processing and other useful functions make targeting accurate and easy. \*1

## Safety functions

An indication of needle depth within the breast is provided on the Biopsy device. \*2

(This function helps prevent the needle from accidentally damaging the exposure table.)

Target position is shown via a diagram on the display screen. After determination of the target position, fine adjustment of the Z coordinate is possible. \*3



## Specifications

Dimensions(W×D×H): 270×205×310 mm

Weight: Approx. 5.5 kg

Power source: Input voltage: AC 200-240 V ·Phase: Single ·Frequency: 50-60 Hz ·Rated current: 3.0A

Needles: ·CNB: Gauge: 14G-22G, Length: 60-120mm (For VAB products, please refer to sales representatives of FUJIFILM medical equipment.)

## Lateral approach (optional) NEW

By attaching the lateral adapter, puncture can be performed not only vertically but also laterally to the compressed breast.

Two puncture directions are now available, enabling wider application of mammographic needle biopsy.



CE 0123

**FUJIFILM**

<http://www.fujifilm.com/products/medical/index.html>

Manufacturer: FUJIFILM Corporation,  
26-30, NISHIAZABU 2-CHOME, MINATO-KU, TOKYO 106-8620, JAPAN